



**ELIZABETH RIVER  
CROSSINGS**

**DTT/MTT/MLK Project – Design Opportunities**

**Presented by Fred Parkinson, P.E., Design Project Manager**

**DBE/SWaM Teaming Workshop, January 26, 2012**

# 1

# PROJECT OVERVIEW

# The Midtown Team non-DBE/SWaM Firms

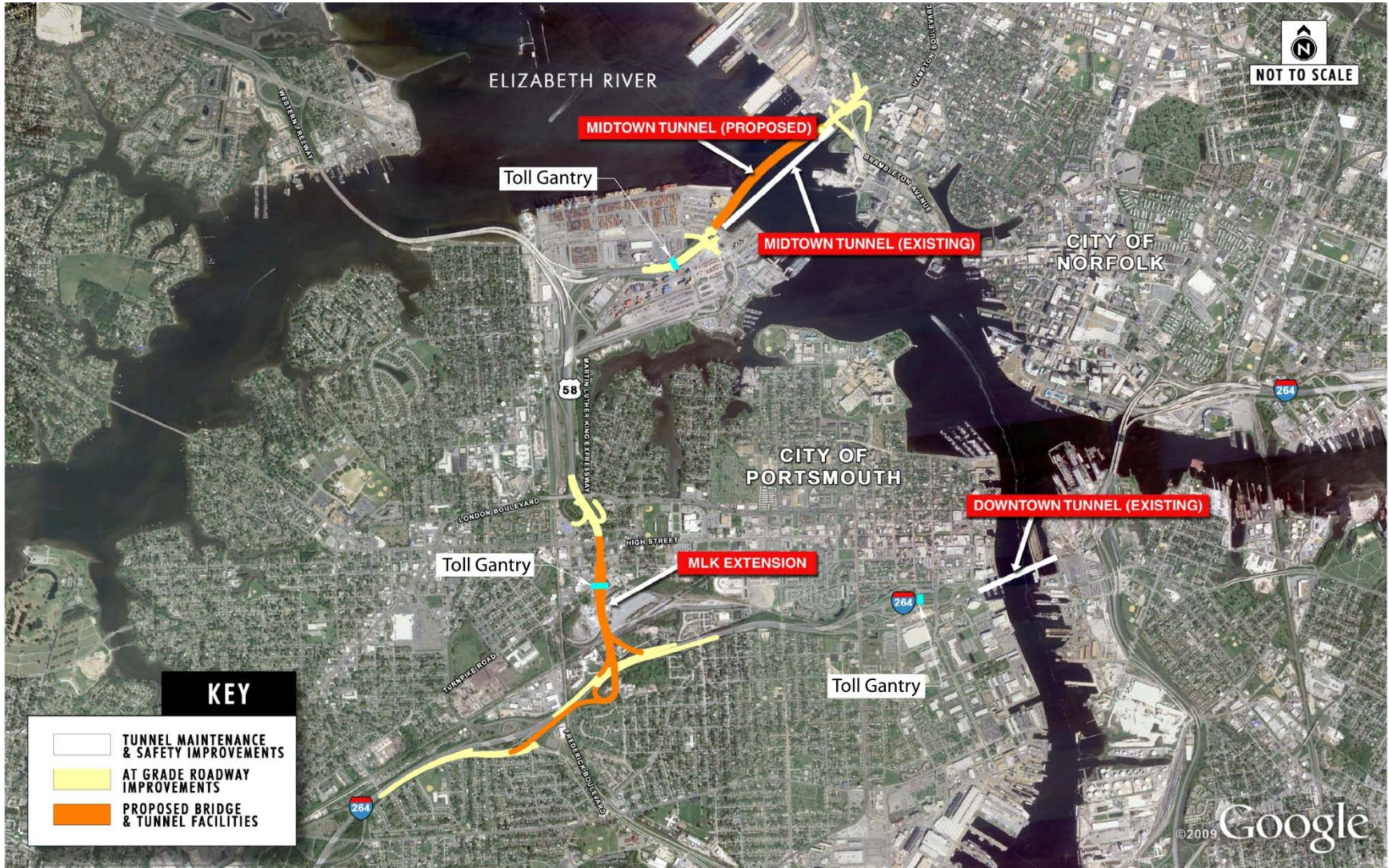
**Design Team** – Parsons Brinckerhoff (Tunnel)  
Brierley (Directional Drill)  
CTL (Concrete Durability)  
Geocomp (Tunnel Monitoring)  
Schnabel (MLK Geotech)  
Volkert (MLK Civil)

# The Midtown Team SWaM/DBE Firms



- SWaM** EEE (Environmental)  
Fishburne (Drilling)  
Land Studio (Landscaping)  
So Deep (Utility Designation)
- DBE** PMI (Surveying)(WBE)  
SCS (Corrosion)(MBE)  
Inner Image Designs (Visualization)(MBE)

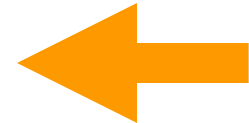
# Project Overview



# Timeline for Development

## Timetable

Call for conceptual proposals	May 2008
Conceptual proposal submittal	September 2008
Public Hearings – Independent Review Panel	March to June 2009
Positive CTB Recommendation	July 2009
Key business points presented to CTB	October 2009
Signature of Interim Agreement	January 2010
Comprehensive Agreement Negotiations Begin	January 2011
Key Business Terms Agreed	July 2011
Comprehensive Agreement	December 2011
Financial Close – Design Restarts	2Q 2012
Tolling Commences	Q3/Q4 2012
Construction Complete	2018



# 2

## DESIGN STATUS

# Status of Design

- **Preliminary Design completed May 2011**
- **About 1000 plan sheets produced to date**
- **Most tasks about 30% complete**
- **Most tasks to be completed on fast-track basis**
- **Some tasks longer schedule**

# Underway Now

- **Adjust scope for negotiated changes**
- **Set up staffing plan and project controls**
- **Complete scope analysis to identify opportunities**
- **Build DBE/SWaM database**

# 3

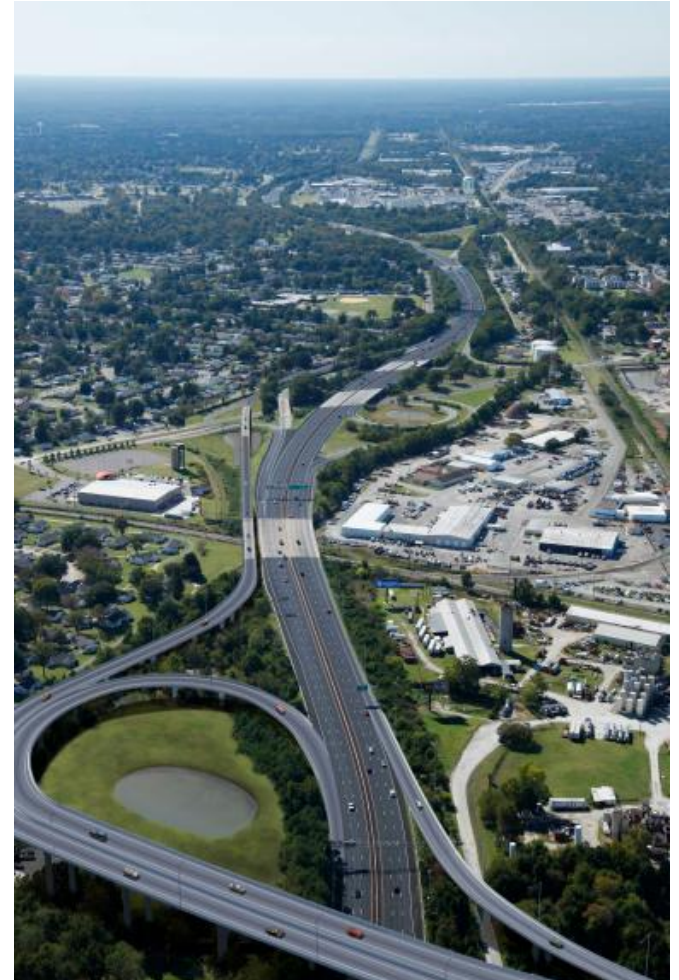
## PRELIMINARY DESIGN OPPORTUNITIES

# Underway Now

- **Adjust scope for negotiated changes**
- **Set up staffing plan and project controls**
- **Complete scope analysis to identify opportunities**
- **Build DBE/SWaM database**

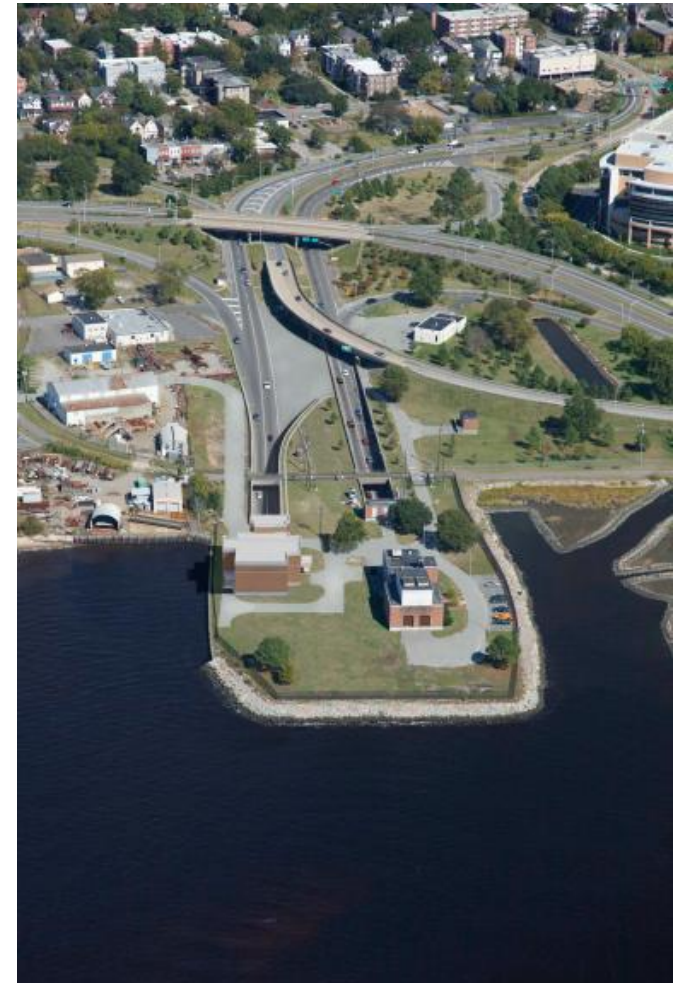
# Civil Work

- **Utility Coordination**
- **Signage and Pavement Marking**
- **Roadway Lighting**
- **Pavement Design**



# Structures and Building Work

- **Boat Section**
- **Bike Trail Bridges**
- **Building M&E**
- **2 MLK Ramp Bridges**



# 4

## WHAT'S NEXT

# Coming Up

- **Finalize opportunities list**
- **Match to interested firms**
- **Solicit quals and pricing**
- **If you came to the last Workshop, you're in our database**
- **Have team in place around March, 2012.**

# Contact



- **More questions on design and design teaming, contact:**

**Fred Parkinson**  
**Parsons Brinckerhoff**  
**6161 Kempsville Circle**  
**Suite 110**  
**Norfolk, VA 23502**  
**(757) 466-9650**  
**[parkinson@pbworld.com](mailto:parkinson@pbworld.com)**